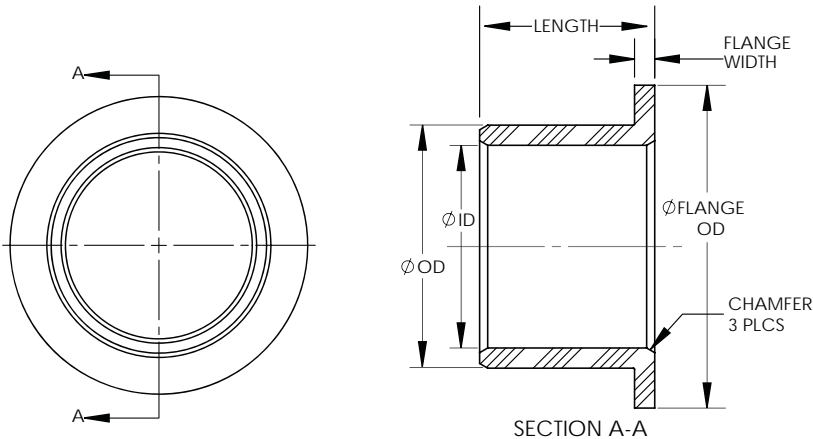


# Flange Bearing Design Worksheet

PROVIDE DETAILS IN BOX TO THE RIGHT



### BEARING DIMENSIONS

Provide hardware dimensions below.

Bearing ID Min \_\_\_\_\_ /Max \_\_\_\_\_

Bearing OD Min \_\_\_\_\_ /Max \_\_\_\_\_

Flange OD Min \_\_\_\_\_ /Max \_\_\_\_\_

### BEARING LENGTH

Length (required): \_\_\_\_\_

### FLANGE BEARING WIDTH

Width: \_\_\_\_\_

### CONTACT INFORMATION

Company \_\_\_\_\_ Name \_\_\_\_\_  
Phone \_\_\_\_\_ Fax \_\_\_\_\_ E-Mail \_\_\_\_\_

### HOUSING AND MATERIAL INFORMATION

Sizes are required if bearing dimensions were not provided above.

Housing Size: Min \_\_\_\_\_ Max \_\_\_\_\_ Housing Material (required): \_\_\_\_\_

Shaft Size: Min \_\_\_\_\_ Max \_\_\_\_\_ Shaft Material (required): \_\_\_\_\_

Current Bearing Material: \_\_\_\_\_

### ENVIRONMENT

Wet (water):  Dry:  Caustic:  Dusty:  Greased:  Other:  Temperature at Bearing: \_\_\_\_\_

### OPERATION

RPM \_\_\_\_\_ Load Weight \_\_\_\_\_ Hours of Operation/day \_\_\_\_\_

### Rotation

360°  Osculating  Intermittent: Yes  No  Frequency/Cycles \_\_\_\_\_

### MANUFACTURING OPTIONS

- Raw Material (raw tube is supplied with additional material allowance for machining)
- Semi-Finished (CIP to rough turn ID/OD and machine water grooves)
- Finished Machined (CIP to machine complete to design)

### ORDER DETAILS

CIP Material: \_\_\_\_\_ Quantity Needed: \_\_\_\_\_

#### CIP Only:

Raw Tube: \_\_\_\_\_

Mandrel Size: \_\_\_\_\_

### APPLICATION: